

# LIGHT WEIGHT TOILET PODS

A NEW AGE TECHNOLOGY



*'Advance Composite Engineering System' Introduces  
'Composite Toilet/Bath PODs' a revolutionary concept  
introduced to  
construction sector.*

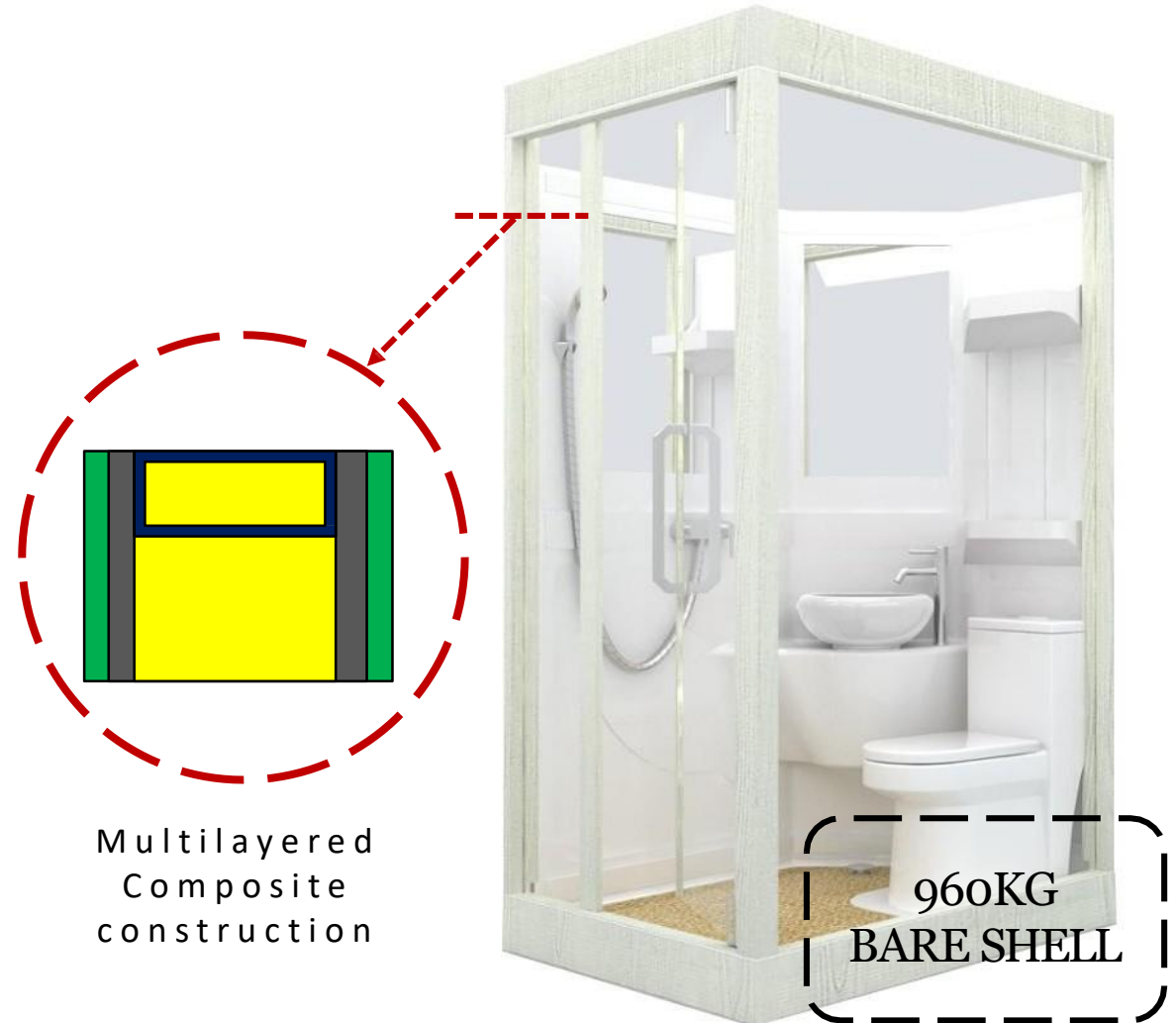


With the ongoing new advancements in the construction sector, we have always thrived to bring new concepts and ideas to the construction industry and tie up with renowned organizations to bring concepts into reality.

In similar fashion, we bring forward to you the '**Composite Toilet PODs**'. These are made out of multilayered composite panels and are extremely light in weight.

## FEATURES:

- Monocoque Construction
- High strength (approx. M30)
- Super Light
- Water proof construction. No separate treatment required
- Maintenance free
- Dimensionally accurate & stable
- Vibration / Abuse resistant
- Ease of Fitment of toilet accessories
- Inside & Outside plaster sand finish – Rough surface to enable tile fixing and painting
- Cost Effective
- Mass productivity possible.



# PRODUCT RANGE:

We can offer the client liberty to choose either bare shell or complete finished POD.

- In case of Bare shell, interior work, MEP & accessories fitment will follow up from clients end.
- In case of Finished POD, interior work & MEP will be inbuilt within the POD itself as per clients specifications. Accessories fitment will be done after POD installation from clients end.

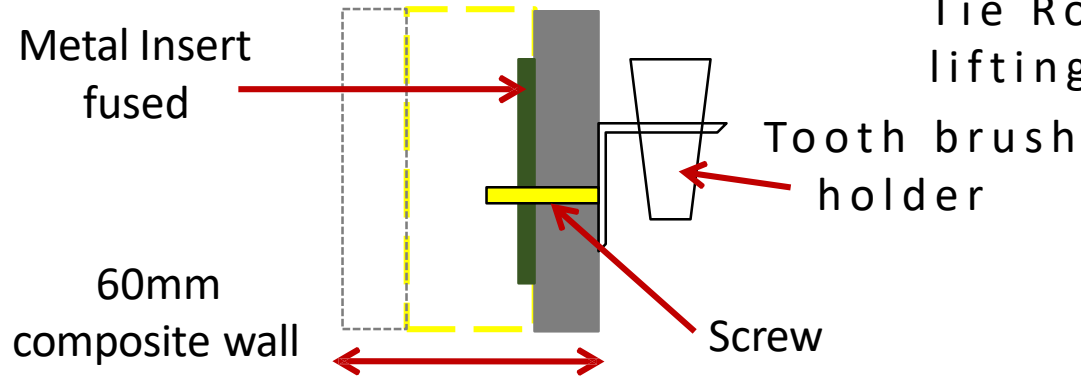
Included Features	Bare Shell POD	Finished POD
Steel reinforcement	✓	✓
Composite Panel works	✓	✓
Waterproofing	✓	✓
Electrical Conduiting		✓
Plumbing lines		✓
Tiling work		✓
Door & Windows		✓
Paint Finish	✓	✓

STANDARD SIZES	
POD TYPE	SIZES (in mm)
Bare Shell	2000 x 1200 x 2745 (L x W x H)
Finished POD	2000 x 1200 x 2745 (L x W x H)
Customized sizes possible based on MOQ criteria	
Wall Thickness	60mm
Bottom slab thickness	80mm

**NOTE: Additional 4 variants of WC PODs will be shortly introduced**

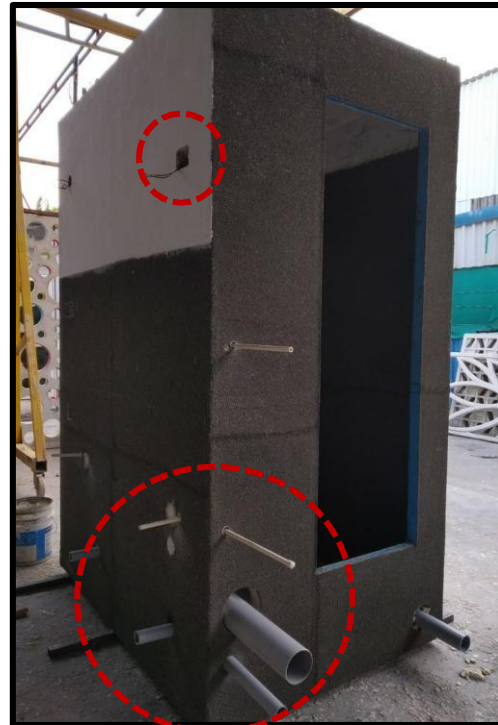
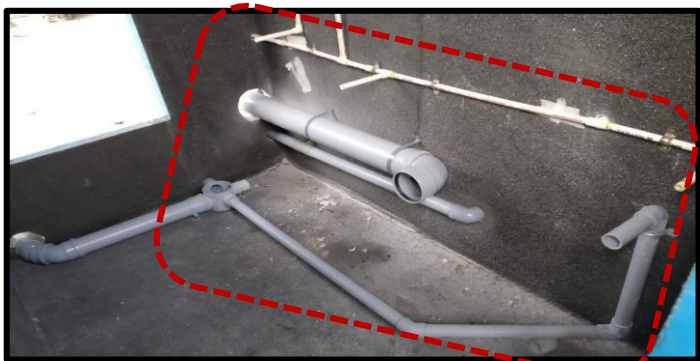
# POD PROVISIONS:

## 1) Fitment of Accessories:



Provisions will be provided via inbuilt metal inserts wherever required

## 2) Inbuilt Plumbing + Electrical Conduiting:



## 3) Handling of POD + Packaging:

Tie Rods + Strong back lifting mechanism ensures safe lifting of PODs with tower crane



## COMPARSON WITH CONCRETE PODs

SR.NO.	PARAMETER	COMPOSITE POD	CONCRETE POD
1	Weight	Very light (4 times less than concrete). Bare shell approx. weight – 960Kg	Heavy. Bare shell approx. weight 5 tonne.
2	Setting Time	Since MOCs are all composite materials, setting time is max 1 hour	21 days minimum curing time.
3	Handling	Fairly light & reasonable setup required	Huge setup & heavy handling equipment's required considering weight factor
4	Cost	Cost effective. Substantial saving in indirect cost of project	Conversion cost and handling of concrete is quite substantial, resulting in high expense.
5	Productivity	Mass production possible. Around 100-150 PODs per month	Not more than 30 to 50 PODs. Since curing time involved.
6	Project completion	Very quick	Time consuming
7	Water proofing	In-built. No separate process involved	Separate procedure and suitable agency involvement required.
8	Chasing	Possible by angle cutter and accurate	Chasing tool required. Possible of cracks & breakage since concrete is brittle.



## BENEFITS:

- Reduces number of post-activities and number of vendors involved – Tiling, plumbing, electric works, interior, carpenter, water proofing vendors etc.
- Complete quality control is maintained at factory level.
- Each POD is dimensionally accurate since its developed in fixtures & molds.
- Project completion time is drastically saved. Can handover the project to end clients well in advance due to the speed.
- Super weight advantage over concrete (3 to 4 times less) than conventional concrete. Hence end user has advantages on reducing structural load.
- Conventional waterproofing activity takes around 21 days time per POD. We give the feature inbuilt.
- Mass production possible. Hence no hindrance of work front and idleness.
- Very Cost Effective. Indirect cost saving is Tremendous.

**For Enquiries, Please contact:**

*Mr. Bhupesh Kamrani (Sales)*

Email: [bhupesh.kamrani@advancedcomposite.in](mailto:bhupesh.kamrani@advancedcomposite.in);

Contact: +91 9527980111

**Factory Address:** Gat No. 473, Mukaiwadi,  
Taluka Mulshi, Pune - 412115

**Website:** [www.advancedcomposite.in](http://www.advancedcomposite.in)



*A Complete make in India Initiative*